

Reshaping our interaction with the environment

Our Contacts

1st Floor - Former GCE Board Building
Sandpit - Great Soppo
P. O. Box 211 Buea
Southwest Region - Cameroon
Tel.: (+237) 233322631
E-Mail: info@engov-institute.org
Website: www.engov-institute.org



Who We Are

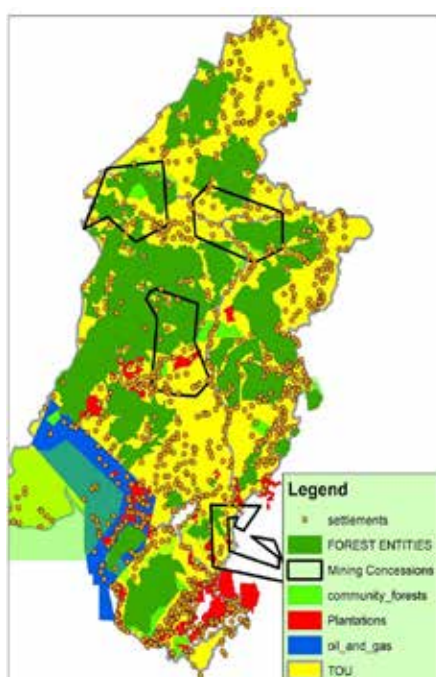
The Environmental Governance Institute (EGI) is a non-denominational and politically unaffiliated organisation with Headquarters in Buea, in the South-West Region of Cameroon with Registration N°: 541/G.37Vol5/SAAJP.

We use a rights-based approach to carry out activities which empower people to change power relations around natural resource use, foster social justice, seek alternative livelihood strategies, and advocate for policies that increase access to and benefits from natural resources.

“Our Strategic Vision for 2017-2021: The integrity of High Conservation Value (HCVs) i.e. Protected Areas (PAs) and peripheral zones, logging concessions and mangrove forest areas in the South West Region is maintained for equitable benefit of local communities.”

Where We Work

We work with forest-dependent and other local communities in Cameroon’s Southwest Region. The region has a population of 1.3 million and spans an area ca. 25, 410 Km². Due to its exceptional biodiversity; the region has among the highest concentration of protected areas in the country. Additionally, the region is home to several commercial logging concessions, and agro-industrial establishments.



Our Strategy

EGI’s challenge is to find ways and means to reconcile the different users with the uses of natural resources as a means to **placing people at the center** of all natural resource management initiatives. We recognize that the most effective solutions lie in people exerting their rights to natural resources and to a safe environment, as reflected in following key strategies:

- Promoting best practices for natural resource management
- Advocating for improved and integrated land use planning
- Advocating for sustainable wildlife management
- Promoting green business and livelihood initiatives
- Collaborating with other CSOs through the **Business and Industries Monitor (BIM)** CSO Coalition





Our Thematic Focus

In our efforts to produce tangible and measurable impacts, we have carved out the following niches:

1 Governance of natural resources

EGI works with strategic partners to promote best practices for natural resource governance:

- Promoting collaborative management of natural resources
- Forest Law Enforcement, Governance and Trade (FLEGT)
- Integrated land-use planning
- Sustainable forest management (SFM),
- Forest Certification (FSC)
- High Conservation Value (HCV)
- Sustainable mining
- Improving community rights and benefits to natural resources (e.g. forest and mining royalties)
- Enhancing community participation in ecosystem-based climate change mitigation actions such as REDD+

2 Biodiversity

This includes our work on the conservation of wildlife species, and the sustainable management of both forest and marine ecosystems (especially mangroves):

- Supporting communities to form and run local institutions such as Village Forest Management Committees (VFMCs)
- Building local capacities on bio-monitoring, anti-poaching, etc.
- Improving local interpretation, understanding and application of national wildlife policy
- Addressing the drivers of deforestation

3 Green economy

Here, our work focuses on promoting green businesses, livelihoods and energy initiatives:

- Empowering smallholder farmers to form and effectively manage cooperatives
- Building smallholder cooperatives' capacities on governance, business planning, sustainable agricultural practices, negotiation and contracting, etc.
- Promoting agro-forestry, beekeeping, and animal husbandry, etc.
- Enhancing community access to energy by promoting renewable sources of energy

4 Corporate social and environmental performance

Our actions here involve:

- Monitoring the environmental and social practices of the private sector
- Enhancing public participation in environmental and social impact assessments (ESIA)
- Monitoring the implementation of environmental and social management plans (ESMPs)
- Monitoring Corporate Social Responsibility (CSR) strategies



© EGI

Overarching Themes

RESEARCH: We have a strong conviction that policy decisions should be guided by in-depth, impartial analyses. Our research agenda seeks answers to critical questions such as: the status of species and ecosystems; human dimensions of natural resources management; drivers of deforestation; adaptation to, mitigation, and impacts of climate change.

POLICY ADVOCACY: Our advocacy work covers the attribution and implementation of natural resource contracts (land, mining, logging concessions, etc.); large-scale infrastructure projects; community access and rights to natural resources; and improving the national legal and institutional framework for natural resources management.

CLIMATE CHANGE: We promote a pro-poor and human rights-based approach to delivering policies geared at reducing deforestation and forest degradation while contributing significantly to the improvement of local livelihoods and sustainability of carbon stocks. Our work includes ensuring the free informed and prior consent (FPIC) of local communities in REDD+ projects and ensuring the respect of access and control rights of forest-dependent and other local communities.

EDUCATION FOR SUSTAINABLE DEVELOPMENT (ESD): Our ESD program engages young people in activities that will empower them to take a decisive position in shaping a more sustainable world. We promote the Whole School Approach (WSA) to ESD in selected pilot schools by supporting them to develop and teach locally relevant themes (LORETs); engaging parent-teacher associations and local councils in teaching and learning; and by introducing green businesses at school level etc.



© EGI



© EGI



© EGI

Major Supporters of Our Work

